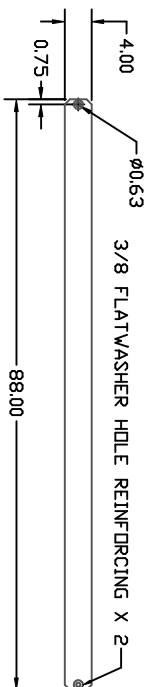


PROPRIETARY DATA

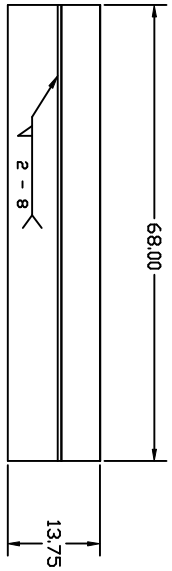
PROPERTY OF ACE ROTO-MOLD MFG. INC. INFORMATION FURNISHED HEREIN IS THE PROPERTY OF ACE ROTO-MOLD MFG. INC. AND SHALL NOT BE USED, DISCLOSED TO OTHERS, OR COPIED WITHOUT THE EXPRESSED WRITTEN CONSENT OF ACE ROTO-MOLD MFG. INC. ALL RIGHTS RESERVED.

HE0500-C

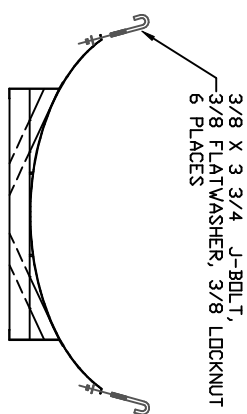
A



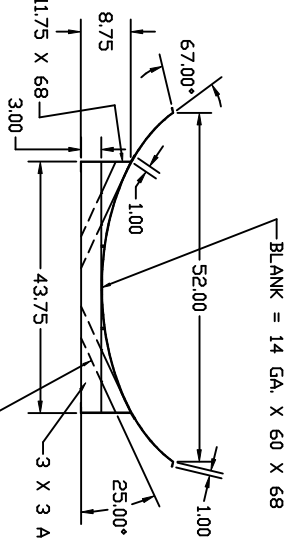
14 GA. SILVER POWDER COATED
BAND WEIGHT: 7.64 LBS.
TANK BANDS - 3 REQUIRED



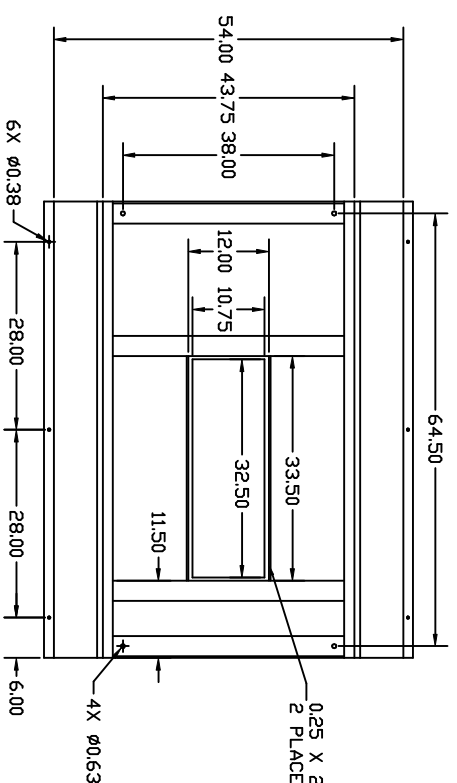
BLANK = 14 GA. X 11.75 X 68



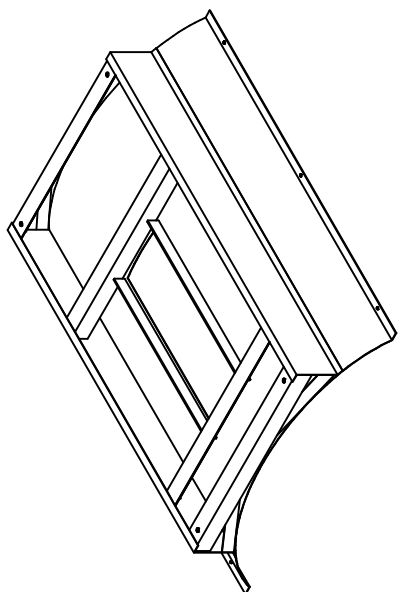
3/8 X 3 3/4 J-BOLT,
3/8 FLATWASHER, 3/8 LOCKNUT
6 PLACES



BLANK = 14 GA. X 60 X 68



0.25 X 2 X 33.50 STRAPS
2 PLACES



DRAWN / DATE		MATERIAL	
NVE 8/24/05		MILD STEEL	
APPRD. / DATE		THIRD ANGLE PROJECTION	
GWC 3/8/07		ANSI 14.5M	
APPRD. / DATE		DHJ 12/9/05	
APPRD.			
REV	DESCRIPTION	DATE	APPRD.
A	TOLERANCE WAS 1% @ 68° F	3/8/07	GWC

ALL DIMENSIONS ARE IN DECIMAL INCHES
TOLERANCES UNLESS OTHERWISE SPECIFIED

DECIMAL +/- .125"
FRACTION +/- 1/4"
ANGLE +/- 1°

CLIENT / DESCRIPTION		SCALE	
500 GALLON ELLIPTICAL TANK SKID WELDMENT		N.S.	
PART NO.		HE0500-C	

Ace Roto-Mold
A DIVISION OF DEN HARTOG INDUSTRIES, INC.
4018 HWY. 60 BLVD., BOX 421, HOUSTON, IOWA 51238